

Tide & Currents Patch Installation

General Note: The present patch “Tide & Currents” is intended for updating of Tide and Currents Database for the following Transas products:

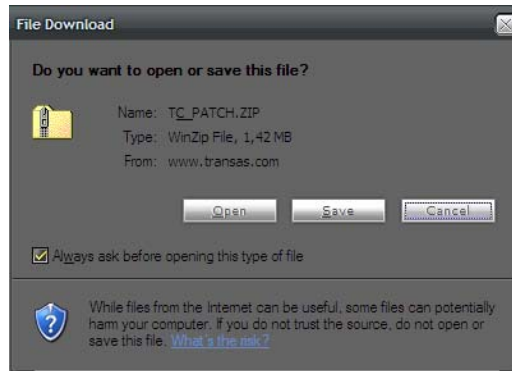
- **Navi-Sailor ECS** (Transas MNS xx – MNS 21 CDROM);
- **Navi-Fisher** (Transas MNS xx – MNS 21 CDROM);
- **Navi-Sailor Office** (Transas MNS xx – MNS 21 CDROM);
- **Navi-Sailor 2500** (Transas MNS xx – MNS 21 CDROM);
- **Navi-Sailor 2400 ECDIS** (Transas MNS xx – MNS 21 CDROM);
- **Navi-Sailor 3000 ECS** (Transas MNS xx – MNS 22 CDROM);
- **Navi-Sailor 3000 Office** (Transas MNS xx – MNS 22 CDROM);
- **AIS Viewer Software** (Transas MNS xx – MNS 22 CDROM);
- **Navi-Fisher 3000** (Transas MNS xx – MNS 22 CDROM);
- **Navi-Sailor 3000 ECDIS** (Transas MNS xx – MNS 22 CDROM).

Follow the instructions step by step to install patch to the current application.

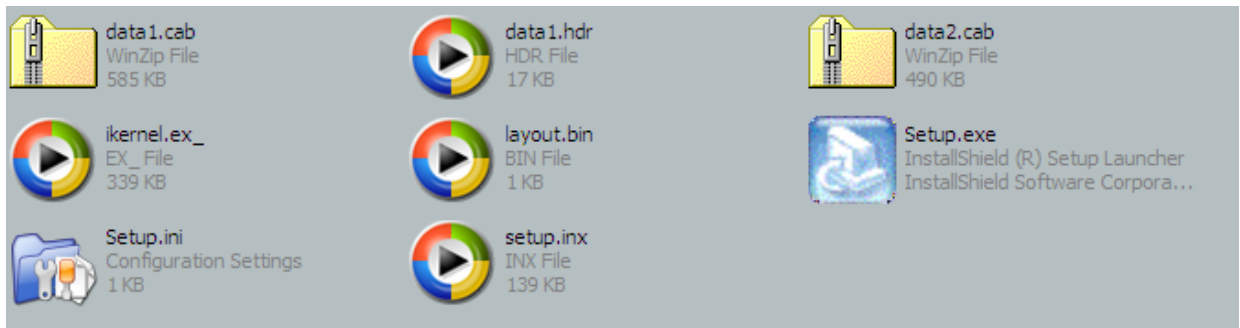
IMPORTANT: It's strongly recommended to close all the Navi-Sailor applications (Navi-Sailor program, System Configuration utility etc.) before installation of Tide & Currents patch!

Otherwise, Navi-Sailor program and settings (nm.cfg file) might be corrupted and unusable!

1. Download and unzip “TC_patch.ZIP” archive from <http://www.transas.com/support/downloads/>



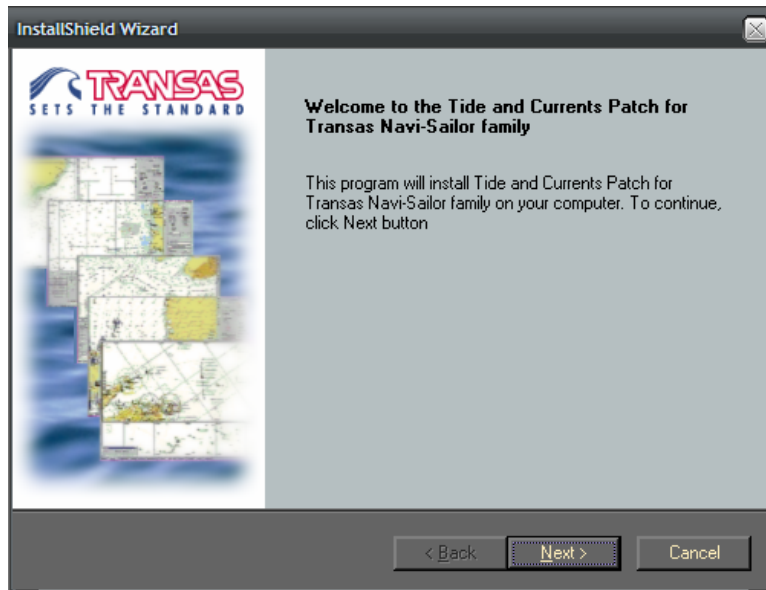
2. Run “Setup.exe” file from “Disk1” folder of the unpacked archive:



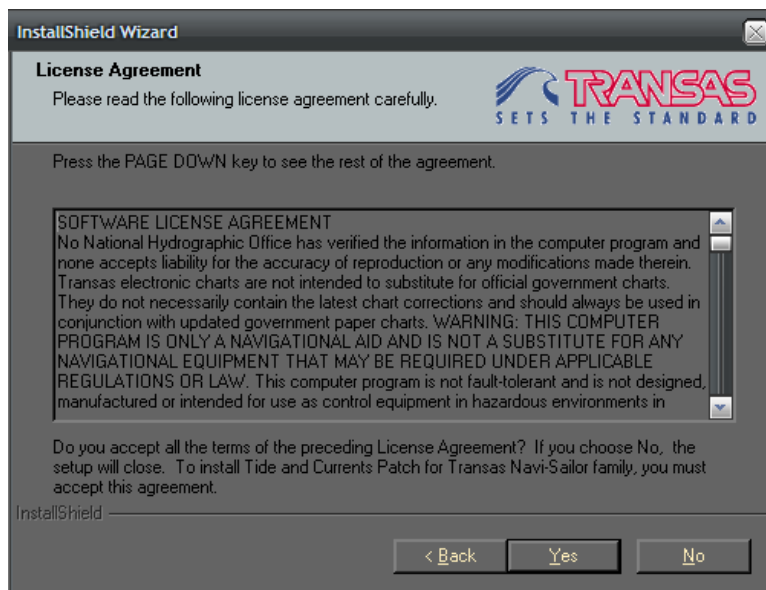
3. Close all the Navi-Sailor applications (*Navi-Sailor program, System Configuration utility etc.*) before installation of Tide & Currents patch! Press “Next” button.



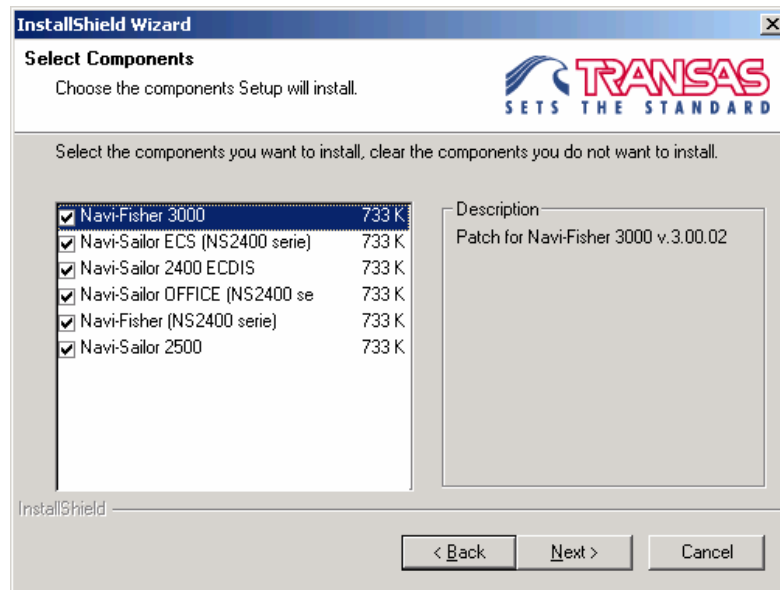
4. Press "Next" button.



5. Press "Yes" button.



5. Existed Navi-Sailor system(s) will be detected automatically. Check box should be filled for the existed Navi-Sailor system(s). Press “Next” button.



6. Run existed Navi-Sailor system and check Tide & Currents database via appropriate functionality.